



VIVAX
METROTECH

MyLocator3 Data and Locator Management Apps



- Manage the locator and its data
- Automatic firmware updates
- Calibration verification
- Limit the use of modes or frequencies
- Add a custom start screen

Manage a single locator or a fleet of vLoc3 series receivers and Loc3 series transmitters with the MyLocator3 data management apps. With this free app, it is easy to keep the firmware of the vLoc3 series of receivers up to date with the latest features. These management tools allow the user to configure the features in the locator, download data collected from locating, and set alarms usable while locating.

Configure locators by turning on or off features, selecting which frequencies the user has access to, and creating custom startup screens. When the locator is connected to a computer running the data management app, the program will automatically search our database for the latest software for both the utility locator and desktop application. The locator connects to the computer running the data management app by the supplied mini-USB cable.



Data Transfer - Download the data collected from the locator, including timestamped GPS coordinates, depth measurements, current on the line, and notes entered at the time of locating. Data can be exported in csv, kml, shp, xls, or xlsx formats.



Software & Firmware Updates - The MyLocator3 app automatically checks for app updates and locator firmware updates whenever connected to the internet.



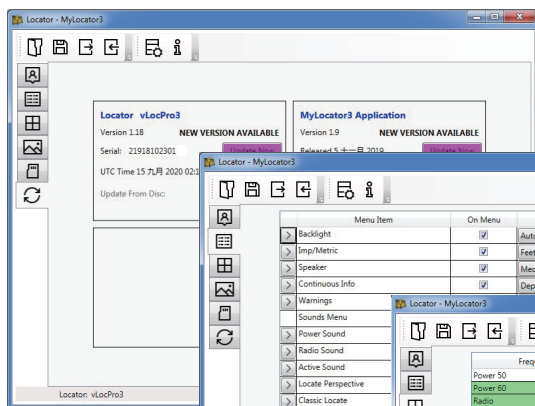
Self-test and Calibration Verification - All self-test results are automatically sent to the data management app. When the locator passes the self-test, a calibration certificate will be available for download in the data management apps.



Personalize - Add owner or user information, a background picture or logo, or a short message to the startup screen.



Lock Out - The locator configurations and settings can be locked, enabling equipment or safety officers to ensure that the user cannot override features selected or removed by management. (Requires optional lockout dongle)



The software and locator firmware updates are shown whenever connected to the internet.



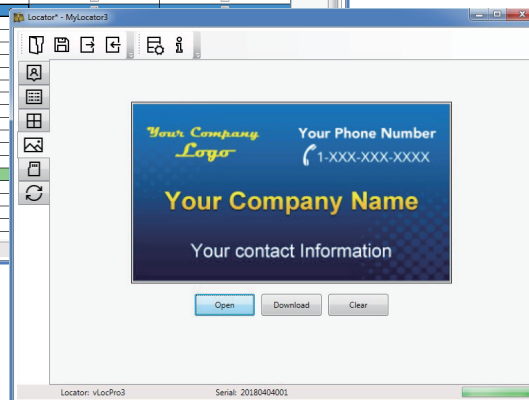
Select which menu options will appear in the locator's menu.



Select the modes and frequencies for the receiver and transmitter.



Add a custom start screen to the locator.



	Data Management App System Requirements and Specifications
Operating System	Microsoft Windows 10 version 1809 or later
Minimum CPU or processor speed	One gigahertz (GHz) or faster processor or System on a Chip (SoC)
Graphics card	DirectX 9 or later with WDDM 1.0 driver
Minimum system memory (RAM)	1 Gigabyte (GB) for 32-bit Microsoft Windows or 2 GB for 64-bit Microsoft Windows
Minimum free storage space	100 megabytes (MB)
PC Peripherals	USB 2.0 port (or later)
Internet Connection	Internet connectivity is necessary to perform updates and to download and take advantage of some features.
Compatibility	vLoc3 series receivers: Pro, ML, DM, RTK, 5000, 9800, XLF, Cam Loc3 series transmitters: 5-watt, 10-watt, 25-watt

Compatibility



Local Vivax-Metrotech Distributor:

Vivax-Metrotech Corporation

3251 Olcott Street, Santa Clara, CA 95054, USA

T/Free: 1-800-446-3392

Tel: +1-408-734-1400

www.vivax-metrotech.com

Tag us on social media @vivax_metrotech



V1.1

Please visit our website for full product specifications.

www.vivax-metrotech.com | www.vxmt.com