

vCamDrain

Wireless Inspection System

- Inspect lines from 1.5" to 3"
- Wireless reel used with mobile devices
- VMC App controls all reel functions
- Instantly share files
- Navigate p-trap and toilet traps
- 70 or 100-ft of custom pushrod

The vCamDrain features a Wi-Fi reel that is controlled by the vCam Mobile Controller (VMC) app. When connected to the reel by Wi-Fi, the VMC app controls the camera lights, distance counter reset, sonde and text writer. The app shows the reel's Wi-Fi status, battery level and charging status. Recording can be done directly to the app and instantly shared or copied to the reel's USB port.

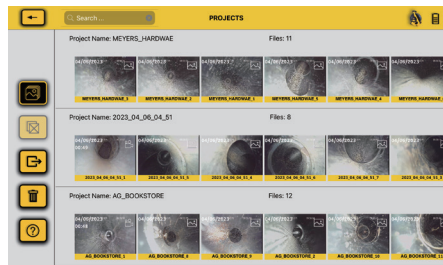


The stainless-steel 0.70" (18mm) diameter HD camera with a sapphire lens and ultra-bright LEDs produces a crisp, clear image of the pipe's interior. The 9mm custom pushrod provides a delicate balance of flexibility and pushing strength that is usable in lines from 1.5 to 3 inches. The drag-resistant HDPE jacketing allows it to navigate multiple bends, tight turns, p-traps, and toilet traps. Both camera head and spring assembly with built-in 512Hz frequency sonde are field serviceable.

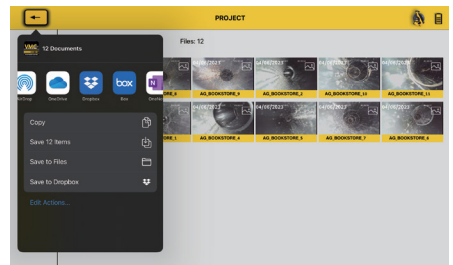
The reel is powered by internal Li-ion batteries providing consistent, clean long-life power. A 6-hour charge will provide 12 hours of power with intermittent sonde use.



The VMC app controls all the reel functions



Files are organized in the searchable gallery



Instantly share files or entire projects



Backed by Vivax-Metrotech's superior dealer network, customer service and service centers.

Camera Head

Model:	D18-HD
Application:	1-1/2 to 3 inches / 40 to 75mm lines
Dimensions:	0.73" (Dia.) x 0.71" (L) / 18.6mm (Dia.) x 18.1mm (L) without standard skid
Lighting:	48 Lumens
Resolution:	1080p HD
Construction:	Stainless-steel camera housing with sapphire lens
Self-leveling:	None, fixed position, non-leveling camera
Environmental:	Water resistance up to 11 BAR pressure
Focus point:	100mm
Field of view:	90°

vCamDrain Wireless Reel

Dimensions:	13.7in(L) x 10in(W) x 16.5in(H)
Weight:	70-feet @ 15lbs / 6.8 kg, 100-feet @ 17lbs / 7.7 kg.
Construction:	High impact ABS injection molded housing
Pushrod:	9mm pushrod x 70-feet / 21m or 100-feet / 30m
Display:	Per the mobile device running the vCam Mobile Controller app
Battery life:	Internal Lithium-ion rechargeable battery provides 12 hours of life from a 6 hour charge
Sonde:	Selectable 512Hz, 640Hz or 33kHz
Environmental:	IP65 and NEMA 4

What's in the box



Recommended Locators



VM-540 and vLoc3-Cam Sonde Locator

Popular Accessories



(Coming Soon)
D20-HD Self-leveling Camera



Tablet Holder Adapter



Reel Carry Bag

Local Vivax-Metrotech Distributor:

Vivax-Metrotech Corporation

3251 Olcott Street, Santa Clara, CA 95054, USA

T/Free: 1-800-446-3392

Tel: +1-408-734-1400

www.vivax-metrotech.com

Tag us on social media @vivax_metrotech



V1.0

Please visit our website for full product specifications.

www.vivax-metrotech.com | www.vxmt.com