

**Components required** to run POSM Portable software with the vCamMX-2 control module.

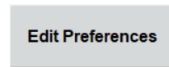
- POSM Software with an active license.
- A PC that meets the minimum requirements to run POSM software (Visit POSM at <https://posmsoftware.com/> for more information).
- A vCamMX-2 control module.
- USB-A to USB-Mini Cable.



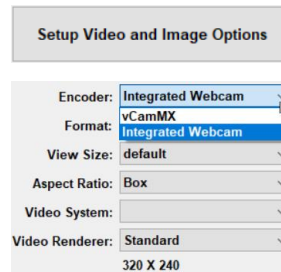
**Before starting check that the vCamMX-2 control module is running the latest firmware.** On the vCamMX-2 control module select **Setup**, then **System**. The firmware version is found in the upper right section of the menu. Compare this firmware revision number to that found on the vCamMX-2 firmware download section of the webpage.

Make all connections with the vCamMX-2 and computer running POSM **turned off**.

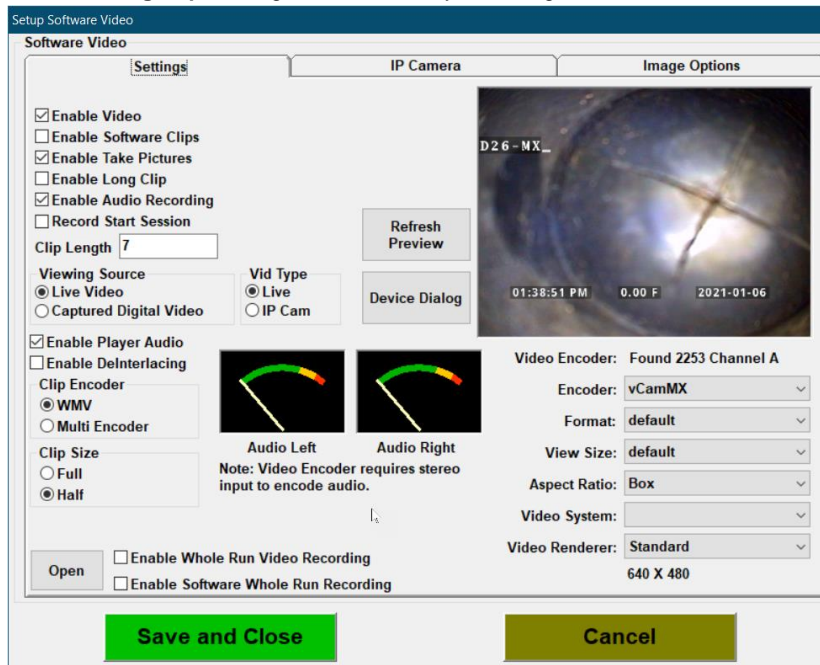
1. Plug the mini-USB cable end into the vCamMX-2 control module.
2. Plug the USB-A end of the cable into the computer running POSM.
3. Turn on the computer running POSM and log into the computer (do not start POSM yet).
4. Turn on the vCamMX-2 control module.
5. Start the POSM software and enter **Edit Preferences**.



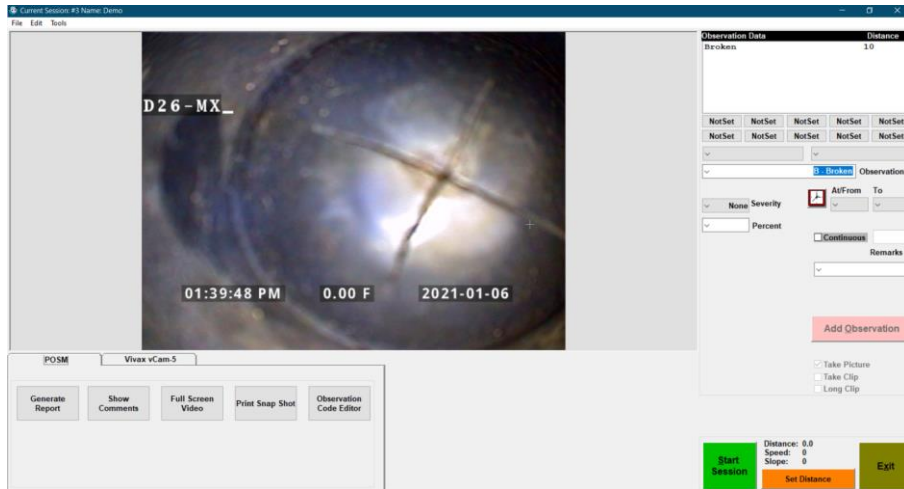
6. Go to **Setup Video and Image Options**.
7. In the video and options submenu, go to the **Video Encoder** section and use the drop-down list to select **vCamMX**, as shown in the illustration to the right.



8. Select **Save and Close**
9. Enter the **Setup Video and Image Options** again. Confirm that your settings match those shown in the below picture.



10. Select **Save and Close**.
11. Start a **New Session** or **Resume Session**, and the video from the vCamMX-2 control module will be seen in the Session as below.



**Tips for getting the most out of the vCamMX-2 Control Module.**






1. Multiple date and time formats
2. OSD colors and positions
3. Add text to the vCamMX-2 screen


**Date and Time Formats**

The vCamMX-2 control modules offer three date formats, units of feet or meters, and 12 or 24-hour time formats.

Date formats available are: **MM/DD/YYYY, DD/MM/YYYY and YYYY/MM/DD**

Time formats available are: **12-hour (08:00PM) or 24 hour (20:00)**

1. Press the **Setup**  key to bring up the sub-menu.
2. Press the **Region**  key to enter the Regional sub-menu.
3. Use the **Right Scroll**  key to navigate to the **Time Format** choice list.
4. Use the **Up/Down Scroll**  keys to highlight the **Date/Time Format** to use.
5. Press the **Enter**  key to complete the selection.

Press the **ESC**  key to return to the setup sub-menu, press again to return to the main viewing screen.

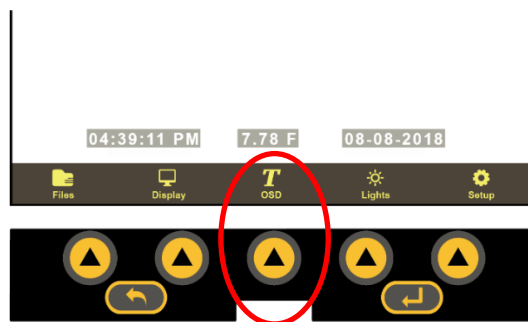


**NOTE**

Pressing the Enter key will save the changes made allowing separate changes to be made at any time to either the time, time format or date without having to move through the entire selections available.

**On-Screen Display Colors and Positions**

The systems time, date and distance of pushrod deployed are shown on the screen and will be recorded in videos and pictures. The OSD info color can also be changed to suit the environment inside the pipe being inspected. By default, the OSD is positioned at the bottom of the screen and in white text.



1. Press the **OSD** key to enter the OSD sub-menu.
2. Press the **Color** key to toggle through the choices of white, green, and yellow.
3. Press the **Position** key to toggle the position from bottom to top.
4. Press the **ESC** key to save the changes and return to the main on-screen menu.

## On-Screen Text Writer

The on-screen Text Writer function allows users to add descriptive text and comments, which will appear on recorded videos and pictures. The user can customize the text colors being shown on the videos and pictures. The on-screen Text Writer has unlimited pages with 14 lines and 30 characters per line per page to be saved and later recalled for use.

The content from the on-screen Text Writer is saved into memory, so if the unit is turned off, the text will still be available when turned on again.

Alternatively, we recommend that you use the free *vCam Live View Mobile* app to add text to the screen with the mobile device's built-in keyboard.



Another option is to use a USB keyboard, which can be used by plugging it into the USB port.



## **T** OSD Sub-menu options

1.	<b>OSD (On-Screen Display)</b> – Consists of the system's time, distance count, and date.
2.	<b>Color</b> – Changes the text colors from white to black to yellow to green, then back to white's default color.
3.	<b>Position</b> – Moves the time/distance/date from the bottom to the top and then off.
4.	<b>ESC</b> – Press to return to the previous screen or to exit an operation.
5.	<b>Page</b> – Scrolls through saved pages of text.
6.	<b>Enter key</b> – Press this key when required to complete an action.
7.	<b>Erase</b> – Clears the current screen of all text and deletes the saved page.
8.	<b>Keyboard</b> – Brings up the on-screen keyboard.
9.	<b>Status bar</b> – Status Bar shows the control module's running features such as sonde and battery status. The current sub-menu location is also displayed.
10.	<b>Current page/Page number</b> – This shows the current page first and the number of saved pages. (current/saved) New text can be entered on the current page, which is identified by the character "-."
11.	<b>On-Screen keyboard</b> – Use the keyboard to add and edit text on the screen.

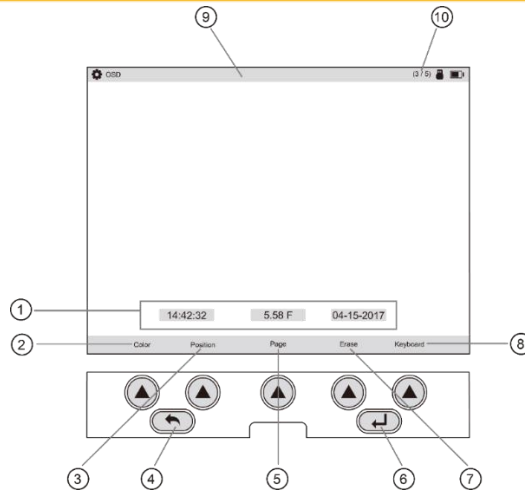


Figure 1

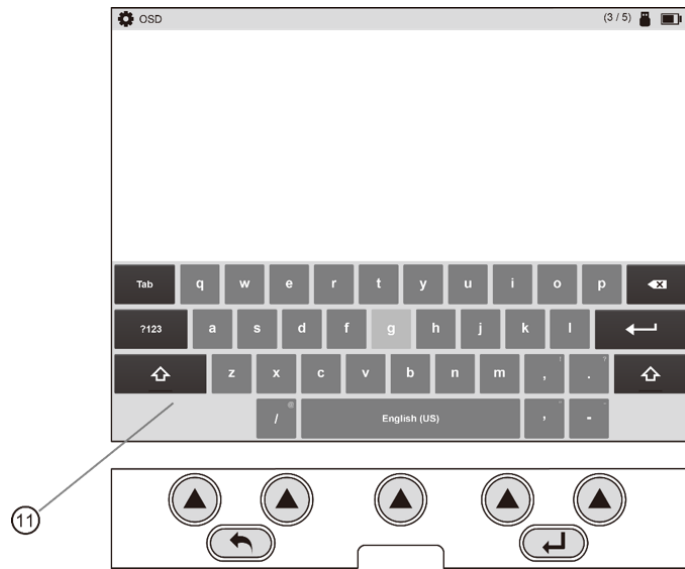
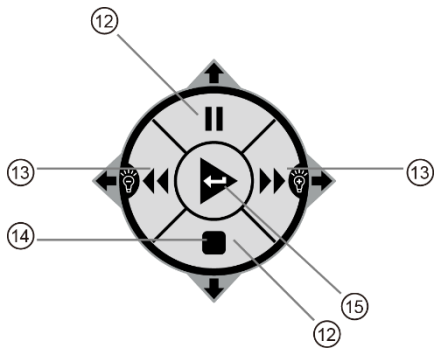


Figure 1a

**Navigating the on-screen keyboard**



12.	<b>Up/Down keys</b> – Use these keys to navigate up and down on the on-screen keyboard.
13.	<b>Left/Right</b> – Use these keys to navigate left and right on the on-screen keyboard.
14.	<b>Show/Hide</b> – <u>During a recording</u> , use this key to hide and show the on-screen text.
15.	<b>Enter</b> – Use this key to select characters from the on-screen keyboard.



**Tip:**  
The on-screen keyboard option requires firmware version 1.4.8 or later.

**To operate the on-screen keyboard:**

1. From the main menu, press the "OSD" **T** key to enter the OSD submenu.
2. Press the "Keyboard" key to bring up the on-screen keyboard to the screen.
3. Use the Rewind, Forward, Stop and Pause keys to navigate the keyboard and use the Enter key (center) to select the text and numeric characters.
4. Press the "ESC" key to close the keyboard and return to the sub-menu. Press again to return to the Main Menu.

With the on-screen keyboard, six lines of text with 37 characters per line can be added.

The text from the on-screen keyboard is automatically saved as it is entered. If the text that is entered is intended for one-time use, press the "Erase" key before advancing to the next page of the text or turning the unit off.

**Note:** The on-screen keyboard will never appear in any videos or pictures.



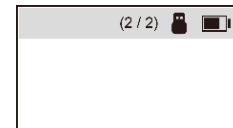
**Tip:**

Use the pause key to pause the video while entering text. When finished entering text, press pause again to resume the recording.

Use the Stop key to hide and show the current page of the text.

**Status bar page information:**

1. In this figure, the upper right-hand corner shows the page status of page 2 of 2 pages.
2. The text 2/ shows that the current page being edited is page 2.
3. The text /2 shows that a total of 2 saved pages are in memory.



**To erase saved pages of text:**

1. Use the "Page" key to scroll through the saved text pages and stop at the page to be deleted.
2. Press the "Erase" key, and a dialog box will appear confirming the current page deletion.
3. Press the "Yes" key to delete the page.
4. Press the "ESC" key to close the keyboard and return to the Main Menu.



**TIP:**

Text can also be added to the screen using the free vCam Live View app. Visit our website for more information and download links.



**TIP**

Darker colors may work better in pipes with water running through them. The camera head's lights may reflect in the water, and white or yellow text may become washed out. Use a darker color and switch from light to dark when needed.



**TIP**

Use the Pause key on the top keypad to pause the video recording. With the video paused, use the up and down arrow keys to scroll through the saved text pages and stop at the desired page. With the desired text being shown, un-pause the video to continue recording. At any time during the recording, press the ESC key to clear the text from the screen.

#### **POSM Technical Support**

Tel: +1 (859) 274-0041 (have your 6-digit PIN number ready)

#### **POSM Remote Support Calling Card**

[Download the POSM Remote Support Calling Card](#)

#### **Vivax-Metrotech Corp. (Headquarters)**

3251 Olcott Street, Santa Clara, CA 95054, USA

T/Free: 1-800-446-3392

Tel: +1-408-734-1400

Fax: +1-408-734-1415

Email: [SalesUSA@vxmt.com](mailto:SalesUSA@vxmt.com)

Website: [www.vivax-metrotech.com](http://www.vivax-metrotech.com)

Visit us at [www.vivax-metrotech.com](http://www.vivax-metrotech.com) to view our full product line and worldwide locations.