



# Sondes & Sonde Locators

**Sondes** are small self-contained battery powered transmitters. Sondes are propelled through non-metallic pipes and ducts and can be located on the surface by a sonde locator or buried utility locator with a sonde mode. Sondes are also built into other products such as a sewer push camera, robotic crawler camera, or attached to a jetter hose. Sondes come in

a variety of sizes which ties into how deep they can be located. Different frequencies are available which allow sondes to be located in metallic or non-metallic pipes and ducts.

## Sonde Range

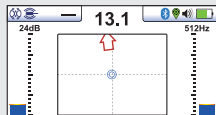
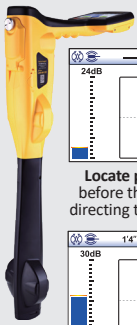
Picture	Order Code	Model / Size (Diameter x Length)	Frequency	Depth Range	Battery/Life	End Cap	Pipe Material
<b>D18 Sonde:</b>							
	2.203.01.00004	D18 Sonde with Eyelet End Cap 0.70" x 3.2" (18.5mm x 80mm)	33kHz	15 ft/ 4.5 M	2 x SR44 button cell 10 Hours	Eyelet	Non-metallic
	2.203.05.00003	D18 Sonde w/ M10 Stud End Cap (Knurled) 0.70" x 3.6" (18.5mm x 92mm)	33kHz	15 ft/ 4.5 M		M10 Stud	
<b>D22 Sonde: 0.87" x 4.5" (22mm x 104mm)</b>							
	1.203.15.00001	D22 Sonde, 9.82kHz	9.82kHz	8 ft / 2.4 M	4 x LR43 button cell 5 Hours	1/4-20 UNC and M12 Female threads	Non-metallic
	1.203.16.00001	D22 Sonde, 83kHz	83kHz				
<b>D23 Flexible Sonde: 0.9" x 17.3" (23mm x 456mm)</b>							
	2.203.03.00004	D23 Flex-Sonde, 512Hz	512Hz	20 ft / 6 M	1 x AA Alkaline 12 Hours	M10 Stud	Metallic and non-metallic
	2.203.04.00002	D23 Flex-Sonde, 640Hz	640Hz				
<b>D38 Sonde: 1.5" x 5.2" (38mm x 122mm)</b>							
	1.203.18.00001	D38 Sonde, 9.8kHz	9.8kHz	16.3 ft / 5 M	1 x AA Alkaline 20 Hours	M10 Stud	Non-metallic
	1.203.17.00001	D38 Sonde, 33kHz	33kHz				
	1.203.19.00001	D38 Sonde, 83kHz	83kHz				
<b>D64 Sonde: 2.5" x 7" (64mm x 180mm)</b>							
	1.203.21.00001	D64 Sonde, 9.8kHz	9.8kHz	26 ft / 8 M	1 x 9V Alkaline 15 Hours	M10 Stud	Non-metallic
	1.203.20.00001	D64 Sonde, 33kHz	33kHz				
	1.203.22.00001	D64 Sonde, 83kHz	83kHz				

Backed by Vivax-Metrotech's superior dealer network, customer service and service centers.

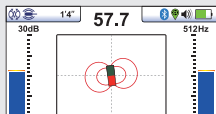
**Sonde locators** pinpoint the location of sondes while they are in non-metallic or metallic pipes or ducts. Sondes are also built into video inspection push cameras or crawler cameras and can also be pinpointed by a sonde locator. Our locators are compatible with many sondes, push cameras, or robotic crawler cameras manufactured by others as well as those from Vivax-Metrotech.

Vivax-Metrotech offers a choice of three sonde locators with different features. We also offer a range of sondes from 18 mm in diameter locatable at a depth of 15 feet / 4.5 m to 2.4"/180 mm diameter locatable to 26 feet/8 m in depth.

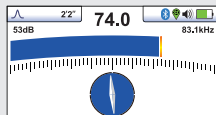
## Sonde Locators



**Locate points** - Shows null before the sonde and arrow directing to the sonde location



**Sonde location** - When directly over the sonde the sonde icon appears and depth is shown in upper left

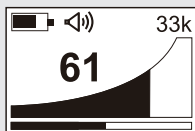


**Pushrod trace mode** - Shows a peak response when locating. Compass indicator turns blue when in line with the pushrod.

**vLoc3-Cam** – The vLoc3-Cam is the easiest to use sonde locator on the market today. The omnidirectional antenna array allows for approaching the sonde from any position. The directional arrows will guide the user first to the front or rear locate point and then directly to the sondes position.

The vLoc3-Cam sonde locator comes standard with sonde/camera frequencies of 512Hz, 640Hz, 8.192kHz, 9.82kHz, 33kHz, and 83kHz making it compatible with the major push cameras and crawler cameras on the market. The receiver is equipped with two “Passive” locate modes of Power and Radio which will detect the presence of some power lines, CATV, telephone and some metallic pipes which radiate 50/60 Hz from nearby or overhead power lines and induced VLF signal from nearby broadcast towers. Push-button depth displays your depth of cover in feet and inches. For active locating, with the use of a portable transmitter, the vLoc3-Cam comes with an 83.1kHz frequency for tracing the pushrod. This frequency is also ideal for water and gas utilities which generally are larger pipes with bell housings and gaskets as well as locating ungrounded small diameter drop wires and inducing signals through the soil, onto services when direct connecting is not an option.

- No ghost signals
- Graphical locate display
- Sonde locate and pushrod trace modes
- Optional Bluetooth connectivity for GPS mapping
- High visibility color 4.3"/10cm Display



**VM-540** – The VM-540 Sonde Locator comes standard with sonde/camera frequencies of 33kHz, 512Hz, and 640Hz. The VM-540 sonde locator is equipped with a “Passive” Power Mode which will detect the presence of some power lines, and some metallic pipes which radiate 60 Hz from nearby or overhead power lines. Push-button depth displays your depth of cover in feet and inches or metric.

- Compact design
- Visual and audio response
- Pushbutton depth of cover
- Ergonomic lightweight design at 4.5 lbs. / 2kg
- Passive “Power” mode detects some live cables

Local Vivax-Metrotech Distributor:

### Vivax-Metrotech Corporation

3251 Olcott Street, Santa Clara, CA 95054, USA

**T/Free: 1-800-446-3392**

**Tel: +1-408-734-1400**

www.vivax-metrotech.com

Tag us on social media @vivax\_metrotech



V1.3

Please visit our website for full product specifications.

www.vivax-metrotech.com | www.vxmt.com